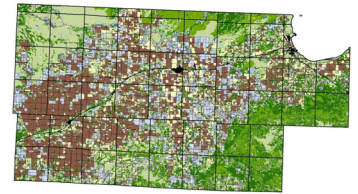




2024 Annual Membership Dues:



Our SWCD is a local unit of government established under state law to carry out conservation programs at the local level. We are committed in addressing issues related to surface water, groundwater, soil and ecological resources by coordinating and joining with local partners for the sustainability and improvement of natural resources.

Supervisors

Chair—John Gaukerud
Vice-Chair—Jan Miller
Secretary—Landon Olson
Treasurer—Ulrik Aaskov
Jade Estling

Staff

District Manager
Scott Johnson
District Tech/Water Planner
Janine Lovold
Administrative Coordinator
Shonda Jelle

Web Site

www.roseauswcd.org

Phone

218.463.1903

Watershed Plan JPB Membership

LOWW JPB—lowwjpb.org
TRP JPB—tworiversplusjpb.org
RRW JPB—roseauriver1w1p.org

Area 1 Membership Dues

\$150

Lakes Country Services

\$3808.74

MACAI Membership Dues

MN Association of Counties Agriculture Inspection
\$125

MASWCD Membership Dues

Minnesota Association of Soil and Water Conservation Districts
\$6704.48

MACDE

Minnesota Association of Conservation District Employees
\$75

NACDE

National Association of Conservation Districts Employees
\$30

RRVCSA

Red River Valley Conservation Service Area 1
\$2313

