



Spring 2022

CONSERVATION CONNECTION

Roseau County SWCD Newsletter

Spring 2022

Roseau County Agriculture Inspector's Office

Minnesota Noxious Weed Law General Notice

Notice is given, in pursuant to Minnesota Statutes, Section 18.83, subdivision 1, (1992), that all persons in Roseau County, Minnesota, shall control or eradicate all noxious weeds on land they own, occupy or are required to maintain. Under the standard operating procedures of the Minnesota noxious weed law, an individual is considered to be in violation if no action is taken to control or eradicate noxious weeds. It is critical that viable seed production or seed spread be prevented. If a field inspection finds that the landowner has allowed noxious weeds to go to seed, that landowner will be considered in violation of the state noxious weed law, and will be assessed a government payment reduction of \$30.00/acre. Anyone receiving farm program payments or enrolled in the Conservation Reserve Program (CRP) is required to control all noxious weeds and other problem weeds on their acreages as defined under contract requirements.

Non-program participants should be aware that their weeds also need to be controlled in the same manner. All roadsides should be clipped or sprayed for weed control along individual landowner's properties. Not only is this a County agriculture issue, but also a Township issue. All landowners in Roseau County must be aware of weed conditions on their properties. A penalty will apply to non-program participants in a similar manner as those who are in Farm Programs.

If you have a weed problem on your fields that needs to be clipped during the primary nesting season (June 1 – August 1), all it takes is a simple phone call to the FSA office (218-463-2452) or the County Ag Inspector's office (218-463-1903) to authorize the control of weeds on a particular field or fields prior to August 1.

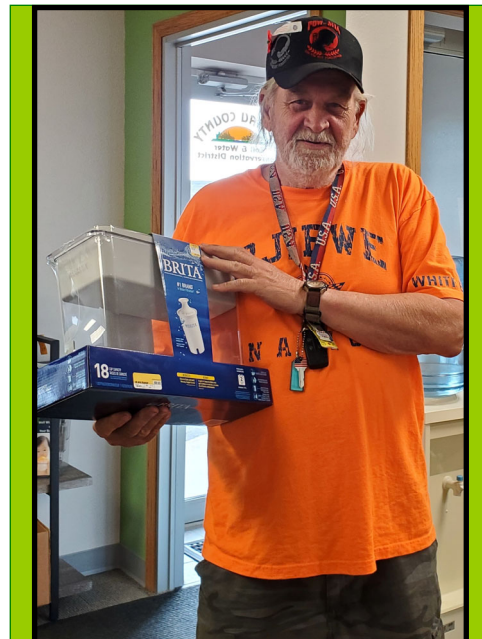
Any complaints received regarding weed infestations for all lands in Roseau County will be taken care of

with the utmost confidentiality to the caller.

We would like to thank all landowners who took the time to control noxious weeds on their properties in 2021. If anyone has questions, please call our office at 218-463-1903.

Scott Johnson
Roseau County Agriculture Inspector
502 7th St, Southwest Suite 5, Roseau, MN 56751
Phone (218) 463-1903

Fair Booth Winner



2021 Fair Booth Winner—Don York

Want to Take a Survey?

Great Backyard Bird Count—Join the bird watchers February 18–21, 2022.

Each year people from around the world come together to watch, learn about, count, and celebrate birds. We realize that this newsletter won't be in your mailbox in time for you to participate if you are learning about this for the very first time. However, the bird count happens about the same time in February every year, so mark your calendar for 2023! www.birdcount.org

Elk Sightings—

The MN DNR is interested in obtaining elk sightings to better understand elk movement and distribution within the state of MN. See an elk? Go online and use the reporting tool to record cows, bulls, and calves.



www.dnr.state.mn.us/elk/elk-sightings.html The map is turned off August 1 through the end of the elk season. Data may still be submitted during elk season, but it won't be displayed.

Loons—Volunteers may provide information on nesting success, number of loons observed, interesting occurrences and problems that may affect loons. There is not a reporting tool on the MN DNR website, but you can send an email to get more information as well as become a volunteer.

LoonWatcherSurvey.dnr@state.mn.us

Bumble Bee Watch—Take a photo, login and submit your photo(s). Identify your species. Sightings are verified by an expert. Smartphone app is available. www.bumblebeewatch.org

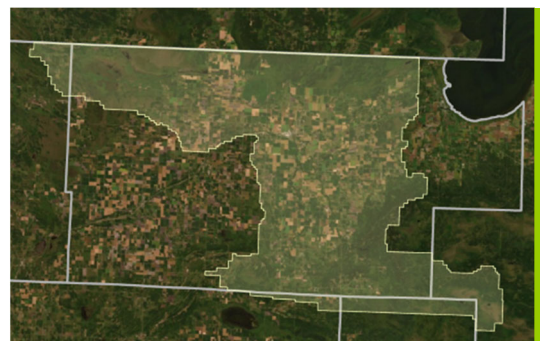


Don't like surveys, but like to watch wildlife? Visit the Web Cams to view a live video stream of a bald eagle nest, peregrine falcon nest (late March), and fish (MN State Fair fish pond, currently a recording).

www.dnr.state.mn.us/features/webcams/index.html

Roseau River One Watershed One Plan

The Roseau River Watershed District, Roseau SWCD and Roseau County are coordinating jointly to develop a new comprehensive watershed management plan under the One Watershed, One Plan program. Images below are from the Public Open House held at the Roseau City Center on December 16 and the Citizens Advisory Committee afterwards. Input gathered from these meetings will be used in the new plan development. For more information and to get updates, go to www.roseauriver1w1p.org.



Roseau River watershed plan development area



Gathering input at a sub-watershed station



Presentation on current watershed features

2022 ROSEAU SWCD TREE ORDER FORM
 502 7th Street SW, Ste 5, Roseau, MN 56751 PHONE: 218-463-1903

GTO # _____

Name _____

Phone _____
 Email for tree notification only, please print **CLEARLY**

Address _____

City _____ ZIP _____

Prefer Text Notification Check Here _____

Orders under \$100 require payment in full. Orders over \$100 require a minimum of 50% down payment. Balance is due at time of pickup. NO CANCELLATIONS after February 1. Specially ordered trees CANNOT be cancelled. All Federal and State funded program trees require 50% down payment at the time of order or within first billing cycle. All phone orders will need 50% deposit or payment in full before order is accepted. The Roseau Co SWCD accepts NO responsibility with regards to survival of planting stock or provisions for replacements. We reserve the right to substitute trees/size if the trees/size listed are not available and the right to cancel due to availability. Finance charges will be assessed on a monthly basis for accounts with zero payment activity. Daily storage fees begin after the last scheduled pickup day.

Call for availability.

1 bundle = 25 trees

SHRUBS	≈ Size	Maturity	Price per bundle	#Bundles	Cost
BUFFALOBERRY	12-24"	Up to 10'	\$40		
CHOKEBERRY	18-24"	3 - 8'	\$40		
COTONEASTER	18-24"	Up to 10'	\$40		
DOGWOOD, Redosier	18-24"	Up to 10'	\$40		
CRANBERRY, Highbush	12-18"	12 - 16'	\$40		
LILAC, Common	18-24"	Up to 12'	\$40		
MAPLE, Amur (ginnala)	18-24"	Up to 20'	\$40		
WILLOW, Flame	12-18"	Up to 20'	\$40		

TREES	≈ Size	Maturity	Price per bundle	#Bundles	Cost
ASH, Green	18-24"	15-25'	\$40		
ASPEN, Quaking	18-24"	40-60'	\$40		
BASSWOOD (American Linden)	18-24"	40-60'	\$62.50		
BIRCH, Paper	18-24"	50-70'	\$40		
CHERRY, Black	18-24"	50-75'	\$40		
CHERRY, Canada Red (Schubert Chokecherry)	18-24"	Up to 30'	\$40		
CHERRY, Pin	18-24"	Up to 30'	\$40		
CHOKECHERRY, Common	18-24"	20-30'	\$40		
COTTONWOOD, Male	2-3'	75-100+	\$40		
CRAB, Red Splendor	12-18"	10-25'	\$40		
JUNEBERRY	18-24"	6-15'	\$40		
MAPLE, Red	2-3'	50-70'	\$40		
MAPLE, Silver	2-3'	60-90+	\$40		
MAPLE, Sugar	12-18"	60-100'	\$40		
OAK, Northern Red	2-3'	60-80'+	\$40		
PLUM, American	18-24"	8-10'	\$40		
POPLAR, Hybrid	8-18"	40-60'	\$40		
WILLOW, Laurel Leaf	2-3'	25-40'	\$40		

CONIFERS	≈ Size	Maturity	Price per bundle	#Bundles	Cost
CEDAR, Eastern Red	8-15"	30-45'	\$40		
JUNIPER, Rocky Mtn	8-15"	15-25'	\$40		
PINE, Scotch	8-15"	30-50'	\$40		
SPRUCE, Black Hills	8-15"	30-60'	\$40		
SPRUCE, Colorado Blue	8-15"	50-100'+	\$40		
SPRUCE, Meyer	8-15"	30-40'	\$40		
TAMARACK	8-15"	50-75'	\$40		

POTTED	≈ Size	Maturity	Price per pot	#Pots	Cost
Black Hills Spruce	18-24"	30-60'	\$17.50		
Colorado Blue Spruce	24-30"	50-100'+	\$17.50		
White Cedar	18-24"	40-50'	\$17.50		
White Spruce	18-24"	40-80'	\$17.50		

SUPPLIES		# Items	Cost
100 flags - 30" pink	bundle	\$13	
Terra-Sorb™	1/4 lb. pkg	\$5	
Terra-Sorb™	1 lb. pkg	\$15	
Premixed Plantskydd®	1 qt	\$22.50	
Plantskydd® deer repellent	1 lb box	\$30	
Plantskydd® deer repellent	2.2 lb box	\$50	
Granular Plantskydd®	1 lb cylinder	\$12	
Granular Plantskydd®	3 lb bag	\$27.50	
Tree Tubes	48" Tube	\$3.50	

Subtotal _____

Sales Tax 7.375% _____

TOTAL _____

If the tree/shrub is not listed, we cannot get it or we are sold out.

We accept credit cards.
Make checks payable to Roseau SWCD.

Please call for availability before sending in payment. This is important.
Office: 218-463-1903
Shonda: 218-689-7379

Signature _____

2021 Rainfall

Township	April	May	June	July	Aug	Sept	Oct	May—Sep	Apr—Oct
America—K. Cole	1.85	2.04	1.75	1.01	2.70	1.19	3.48	8.69	14.02
Barnett—O. Vacura	1.54	3.74	1.62	1.37	3.57	1.06	3.02	11.36	15.92
Beaver—D. Grugal	2.13	1.91	0.79	2.07	4.85	1.03	4.13	10.65	16.91
Cedarbend—D. Olson	2.21	2.37	2.43	1.17	1.84	1.56	3.42	9.37	15
Clear River—M. Brandli	2.11	3.40	1.93	1.06	2.80	1.41	3.66	10.6	16.37
Deer	Interested in measuring rainfall for Deer Twp? Call us @ 218-463-1903								
Dewey—D. Gustafson	0.83	2.48	1.82	0.49	2.66	1.20	3.62	8.65	13.1
Dieter—R. Braaten		1.28	2.33	0.90	2.05	0.49	2.80	7.05	9.85
Enstrom—Santl Farms	1.56	2.85	1.99	0.91	3.38	1.42	3.05	10.55	15.16
Falun—E. Johnson	1.78	2.30	1.87	0.79	3.09	1.16	3.85	9.21	14.84
Golden Valley—K. Zimdars	1.80	1.50	1.10	1.40	5.19	1.49	5.43	10.68	17.91
Grimstad—M. Whitt	1.87	2.16	1.29	1.28	4.39	1.52	3.28	10.64	15.79
Hereim—B. Evans		2.35	2.60	.80	2.60	1.30	3.75	9.65	13.4
Huss—L. Wiskow	1.55	1.61	0.33	0.69	6.64	1.47	4.99	10.74	17.28
Jadis—D. Grafstrom	1.32	1.64	1.53	1.11	3.52	1.18	3.00	8.98	13.3
N. Jadis Addn—Customs	1.96	1.75	1.60	0.92	2.74	1.23	3.24	8.24	13.44
Juneberry—C. Sikorski	1.59	2.60	1.57	0.57	1.58	1.06	2.90	7.38	11.87
Lake—B. Wennerstrand*	2.25	2.13	2.37	1.43	2.74	1.40	2.91	10.07	15.23
Laona—Estling Farms	1.72	2.66	2.28	0.74	2.59	1.28	3.45	9.55	14.72
Malung—R. Sandstrom	1.73	3.64	1.50	0.68	4.18	0.35	2.82	10.35	14.9
Mickinock—D. Carlson	2.22	2.05	0.66	0.69	4.10	1.65	4.84	9.15	16.21
Moose—	Interested in measuring rainfall for Moose Twp? Call us @ 218-463-1903								
Moranville—J. Knudson	1.91	2.80	1.49	0.73	2.45	1.38	3.60	8.85	14.36
Nereson—A. Heggedal	1.30	2.31	1.47	1.34	5.99	1.48	3.60	12.59	17.49
Palmville—	Interested in measuring rainfall for Palmville Twp? Call us @ 218-463-1903								
Pohlitz—Roseau WMA*	1.53	2.93	0.82	1.19	2.73	1.51	2.63	9.18	13.34
Polonia—V. Gryskiewicz	1.04	1.81	1.00	0.51	1.90	1.10	2.82	6.32	10.18
Poplar Grove—E. Gust	1.60	1.57	0.95	0.95	7.17	1.48	5.33	12.12	19.05
Reine—D. Dole	1.93	2.10	1.16	0.84	5.12	1.99	5.56	11.21	18.7
Ross—M. Magnusson	1.64	1.58	1.99	1.34	3.07	1.22	2.89	9.2	13.73
Skagen—	Interested in measuring rainfall for Skagen Twp? Call us @ 218-463-1903								
Soler—	Interested in measuring rainfall for Soler Twp? Call us @ 218-463-1903								
Spruce—C. Johnson	1.91	4.91	1.42	0.55	4.57	1.56	3.39	13.01	18.31
Stafford—T. Dahlgren	1.67	2.82	1.16	1.03	4.46	1.45	3.21	10.92	15.8
Stokes—J. Gaukerud	1.78	2.49	1.25	1.43	3.36	1.10	2.88	9.63	14.29
Stokes—P. Monsrud	1.82	2.40	0.90	0.98	4.25	1.16	2.92	9.69	14.43
Warroad (E. Lake)—G. Bitzer	2.09	3.36	1.53	1.18	2.42	1.29	3.28	9.78	15.15
Average	1.74	2.42	1.52	1.00	3.58	1.29	3.55	9.81	15.00

* measures precipitation the whole year

Rainfall monitoring participants get a free rain gauge and parts.

Lake of the Woods Watershed Joint Powers Board

The Lake of the Woods Watershed Joint Powers Board (LOWWJPB) was established in 2019 for implementation of the new comprehensive watershed management plan. The JPB official associates are Warroad Watershed District (WWD), Lake of the Woods County, Roseau County, Lake of the Woods SWCD, and Roseau SWCD. Members of the JPB include Jan Miller (Chair), Bill Thompson (Vice-Chair), Ed Arnesen (Treasurer), Russell Walker (Secretary), and Nancy Dunnell.

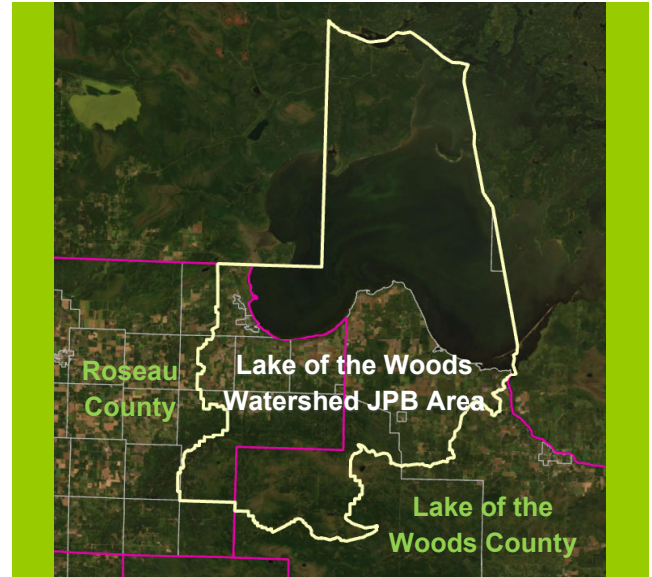
A two-year Work Plan detailing Projects and Practices was submitted to the Board of Water and Soil Resources in 2020 resulting in \$612,173 being awarded to the JPB. The Work Plan items include:

- City of Warroad stormwater retrofit analysis,
- Warroad River streambank stabilization projects,
- Project alternative identification for East and West Branch Warroad River and Roseau County Ditch 10,
- Well verification,
- Cost share for structural and non-structural agricultural best management practices such as side-water inlets/outlets and cover crops
- Cost-share for forest management plans,
- Keep It Clean Program,
- Lake of the Woods County Ditch 1 stabilization investigation and design,
- Shoreline protection projects on Lake of the Woods, and
- Sub-surface treatment system upgrades.

Please go to the www.lowwjpb.org homepage and scroll down to access the digital pamphlet to learn more about the plan and work plan items. Move your mouse in the upper right hand corner of the pamphlet to make the expansion arrow icon visible and then click on it. The pamphlet will increase in size for better viewing.

Showcase—The photos on the right and on the next page, showcase one of the Work Plan project items: the Warroad River streambank stabilization projects. All photos courtesy Lake of the Woods SWCD for the LOWWJPB during the September 2021 tour. These completed streambank restoration sites are located on the East and West Branches of the Warroad River.

History—Three landowners contacted the WWD Board for help as they were losing land into the river due to streambank failure. Adjacent structures, such as farm buildings and a driveway, were also at risk at a couple sites. Using funds



The JPB area encompasses portions of Roseau and Lake of the Woods County.



Ulwelling Streambank Restoration Site
The project utilized natural armoring / anchoring materials such as root wads, vegetation installation, and strategic placement of on-site fallen trees.



Fast Streambank Restoration Site
The project used rip-rap armoring.

from the LOWW JPB with a 10% local match, the WWD hired Houston Engineering Inc to survey and design each site. Andrew J Stoskopf Trucking Inc. was contracted to install the restoration practices, which resulted in either rip-rap armoring or armoring with natural materials, depending on landowner preference.

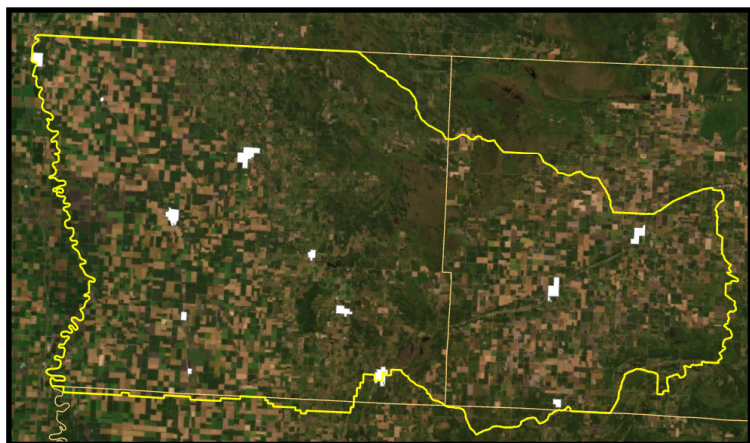
Results—The three projects total 416 linear feet of shoreland restoration with 18 tons of sediment reduction and 80 lbs/year of phosphorous reduction to the Warroad harbor and ultimately the lake.



Phillipe Streambank Restoration Site
The project utilized rip-rap armoring.

Two Rivers Plus Joint Powers Board (TRP JPB): Cover Crops / Field Windbreak Cost-Share Programs

Cover Crop Program – Discover if cover crops will become a normal part of your field operations. As you well know, cover crops benefit you by suppressing weeds, improving soil conditions as well protecting your topsoil, especially in those winter months with little to no snow cover. For beef operations, cover crops may provide an alternative feed for forage. Landowners wanting to establish a cover crop within their regular field rotation may contact the Roseau SWCD to schedule an appointment as well as get more information. Contracts are three years and the practice may be rotated to different fields every year.



The JPB area covers most of Kittson County and about a third of Roseau County.

Field Windbreaks – Need a little more permanent wind protection for your field? Besides reducing soil erosion from the wind, other windbreak benefits include enhancing crop health and productivity by protecting plants from wind-related damage and reducing transpiration and evaporation losses. The types of shrubs and trees will depend on what your soils are. The cost-share rate is 75%. Contracts are for ten years.

Apply—To apply for these programs, please make an appointment with the Roseau SWCD.

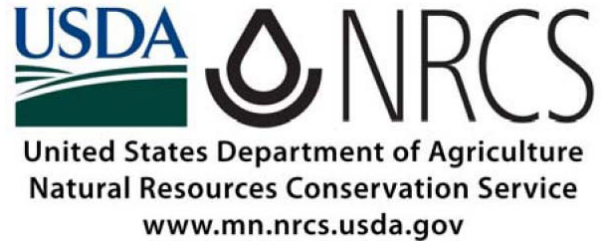
About the TRP JPB—Established in 2021, the JPB's mission is to carry out the newly developed and adopted Two Rivers Plus Comprehensive Watershed Management Plan. The Board is made up of four primary members and four alternates. The primary members are Landon Olson, Andrew Muir, Leon Olson, and Daryl Wicklund. All members are elected officials, hailing from Roseau and Kittson SWCDs and Kittson and Roseau Counties, respectively.

For more information, visit www.tworiversplus1w1p.org.

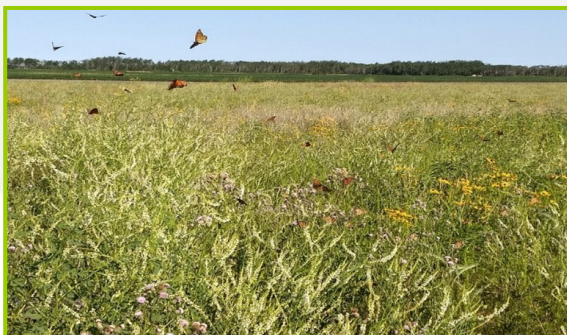
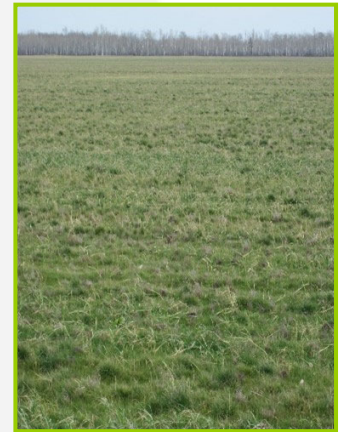
NRCS Roseau Field Office



Left to right: Karin Thompson-Carlin, Office Clerk; Kathy Fillmore, Team Lead / District Conservationist; and Bonnie Hasbrouck, Soil Conservationist



NRCS is once again gearing up for Cost-Share assistance to participants through the EQIP (Environmental Quality Incentives Program) and CSP (Conservation Stewardship Program) signups. Applications can be obtained from the office. To be eligible you need to be a landowner/operator in Roseau County and a participant of USDA programs through FSA. For further information on meeting eligibility requirements, contact the office. For further information on the programs and what they have to offer contact the office or search the World Wide Web for MN EQIP or CSP 2022.



The U.S. Department of Agriculture (USDA) prohibits discrimination in all its programs and activities on the basis of race, color, national origin, age, disability, and where applicable, sex, marital status, familial status, parental status, religion, sexual orientation, genetic information, political beliefs, reprisal, or because all or a part of an individual's income is derived from any public assistance program. (Not all prohibited bases apply to all programs.) Persons with disabilities who require alternative means for communication of program information (Braille, large print, audiotape, etc.) should contact USDA's TARGET Center at (202) 720-2600 (voice and TDD). To file a complaint of discrimination write to USDA, Director, Office of Civil Rights, 1400 Independence Avenue, S.W., Washington, D.C. 20250-9410 or call (800) 795-3272 (voice) or (202) 720-6382 (TDD). USDA is an equal opportunity provider and employer.

Roseau County SWCD

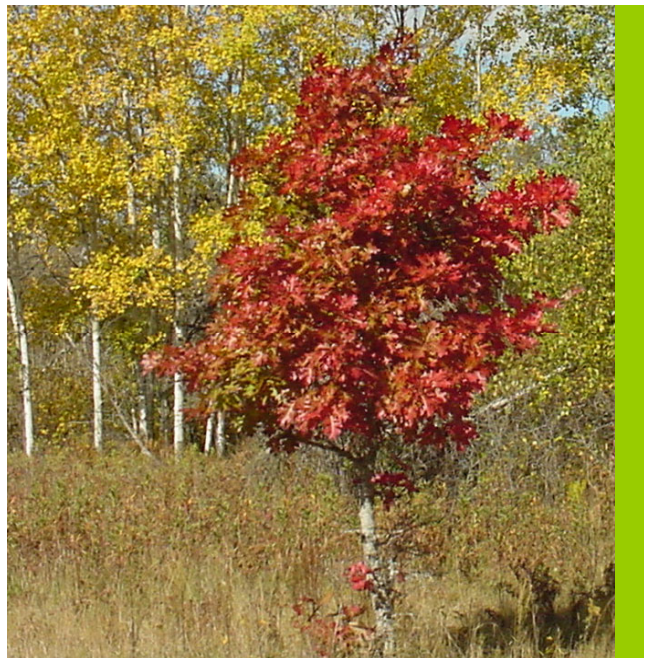
502 7th St SW, Ste 5

Roseau, MN 56751

Oak Tree Facts

- There are three types of oak trees: white, red and black. Bur oak, which is native to Roseau County, is a type of white oak.
- One oak tree can produce 10 million acorns during its lifetime. One acorn out of 10,000 will grow into a tree and one out of a 1000 trees will survive to maturity.
- Oaks can grow in height up to 148 ft. They are considered a middle height tree.
- Oak species in warm climates are evergreen.
- At age 700, oaks are considered old. They start dying after 1000 years.
- Acorns are poisonous to dogs and horses. The tannic and gallic acids cause kidney disease and gastrointestinal problems.
- The cork in wine bottles is produced from cork oak bark.

www.thefactsite.com; Wikipedia



Northern Red Oak in eastern Roseau County