



Our SWCD is a local unit of government established under state law to carry out conservation programs at the local level. We are committed in addressing issues related to surface water, groundwater, soil and ecological resources by coordinating and joining with local partners for the sustainability and improvement of natural resources.

Supervisors

Chair—John Gaukerud
Vice-Chair—Jan Miller
Secretary—Jade Estling
Treasurer—Landon Olson
Vacancy

Staff

District Manager
Scott Johnson
District Tech/Water Planner
Janine Lovold
Administrative Coordinator
Shonda Jelle

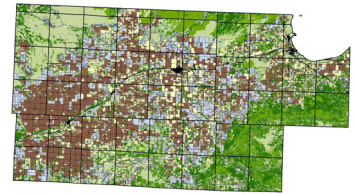
Web Site

www.roseauswcd.org

Phone

218.463.1903

2021 Annual Membership Dues:



Area 1 Membership Dues

\$150

Lakes Country Services

\$112

MACAI Membership Dues

MN Association of Counties Agriculture Inspection

\$85

MASWCD Membership Dues

Minnesota Association of Soil and Water Conservation Districts

\$0 (pending)

MASWCDE

Minnesota Association of Soil and Water Conservation District Employees

\$100 (pending)

NACD

National Association of Soil and Water Conservation Districts

\$0

